

# Custom Rates

2007



# 2007 RATES PAID BY KANSAS FARMERS FOR CUSTOM WORK



Kansas Department of Agriculture  
Division of Statistics  
In Cooperation With National Agricultural Statistics Service

P.O. Box 3534  
632 SW Van Buren, Rm. 200  
Topeka, Kansas 66601-3534  
Phone (785) 233-2230

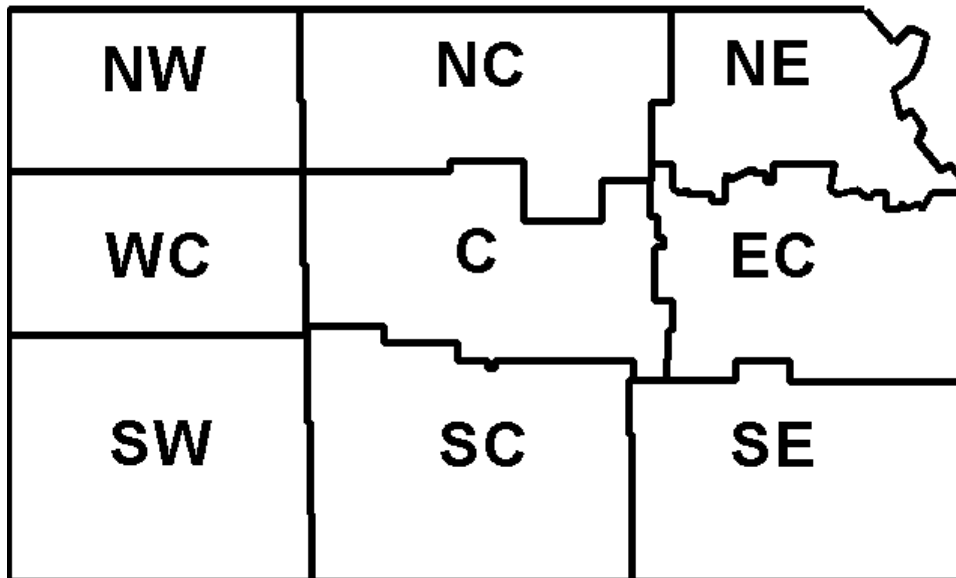
Compiled by

Darin Twete, Agricultural Statistician  
Stephen Habets, Agricultural Statistician

Eldon J. Thiessen, Director  
Eddie Wells, Deputy Director

Glennis Stock, Statistical Assistant  
Rita J. Smith, Editorial Assistant

January 2007  
KANSAS DISTRICTS



National Agricultural Statistics Service / USDA

Website: [http://www.nass.usda.gov/Statistics\\_by\\_State/Kansas/Publications/Custom\\_Rates/index.asp](http://www.nass.usda.gov/Statistics_by_State/Kansas/Publications/Custom_Rates/index.asp)

## TABLE OF CONTENTS

	Page
Introduction .....	3
Grain Harvesting	
Wheat .....	4
Grain Sorghum .....	5
Corn.....	6
Soybeans.....	7
Sunflowers.....	8
Seed Cleaning	
Wheat, Soybeans, Alfalfa, and Red Clover.....	9
Historical Averages.....	9
Grain Hauling	
Wheat, Grain Sorghum, Corn, Soybeans, and Sunflowers.....	10
Silage Operations .....	11
Haying	
Mowing, Swathing, Conditioning, and Sideraking .....	12
Baling .....	13
Hauling .....	14
Stacking.....	14
Entire Operation .....	15
Rotary Mowing .....	15
Tree Shearing .....	15
Land Tillage	
Disking.....	16
Harrowing .....	16
Chiseling.....	17
Plowing and Undercutting .....	17
Field Cultivation .....	18
Historical Averages.....	18
Planting	
Regular-Till Planting .....	19
Grass and Legume Seeding .....	19
Historical Averages.....	20
Minimum-Till or No-Till Planting.....	21
Historical Averages.....	21
Chemical Applications	
Row Crop Cultivation .....	22
Dry and Liquid Fertilizers .....	22
Anhydrous Ammonia .....	23
Herbicides.....	23
Insecticides.....	24
Historical Averages.....	24
Feed Preparation	
Grinding, Rolling, Mixing.....	25
Pelleting, Sacking .....	26
Historical Averages.....	26
Feed Delivery.....	27
Machinery Rental .....	28
Terracing and Dozing.....	29
Manure Removal and Spreading .....	29
Fencing.....	30

## INTRODUCTION

This publication reports the average rates paid by Kansas farmers and ranchers for custom work performed on their operation in 2007. A special thanks to the 1,497 farmers and ranchers, custom operators, co-ops, and elevators for their response to this survey. Our appreciation also goes to the Cooperative Extension Service's county agricultural agents who reviewed the questionnaire.

The data in this book provide additional information to custom operators, farmers, and ranchers for making decisions about rate charges. The prices reported here should not be regarded as official or established rates. The average figures in this book give equal weight to all reports received.

The prices in this book include charges for machines, power, fuel, and the operator. These prices do not include the costs of chemicals, seeds, and other materials. The one exception is hay baling materials. Exchange work between farmers is not considered custom work.

There are large variations in the rates charged for specific jobs. For many items, the State averages may not be typical of any particular locale. There are many reasons for price differences. Some farmers may charge lower prices to neighbors, relatives, or close friends. Soil conditions and field sizes are also significant factors. Rates are often lower in western Kansas where the larger farms are well suited to extensive operation with heavy equipment.

The average custom rates charged in 2007 are generally similar to those reported in 2006. Of the more than 130 custom work items or machinery rentals in this report, 104 increased in price, 3 were unchanged, and 32 decreased in price. The report contains historical tables and graphs which show the results of previous surveys.

In the past year, we have received many comments about the Custom Rates report from the agricultural community. We appreciate this feedback and encourage readers to continue sharing their ideas and suggestions regarding this survey.

## GRAIN HARVESTING

**WHEAT:** Custom harvesters charged a flat rate of 16 cents per bushel in 2007. The per acre charge for harvesting wheat averaged \$16.85 with, in most cases, an additional average charge of 16.0 cents per bushel for yields greater than 21 bushels per acre. The per acre rate is up \$1.07 from 2006.

### Custom Rates for Wheat Harvest, 2007, by District

District	Number of Reports <sup>1/</sup>	Dollars per Acre		Number of Reports <sup>1/</sup>	Extra Charge for High Yield	
		Range	Avg.		¢ per Bushel	Above Bushels
NW	59	12.00-20.00	16.46	54	16.3	21
WC	54	13.00-18.00	16.26	47	16.1	20
SW	67	12.00-18.00	15.93	59	15.9	20
NC	58	12.00-18.00	15.88	49	15.8	21
C	74	12.00-25.00	15.72	57	15.2	22
SC	94	13.00-24.00	16.47	78	16.2	21
NE	53	14.00-30.00	19.28	14	16.4	21
EC	30	15.00-30.00	20.93	6	16.2	20
SE	28	15.00-21.00	18.32	7	17.9	21
STATE	517	12.00-30.00	16.85	371	16.0	21

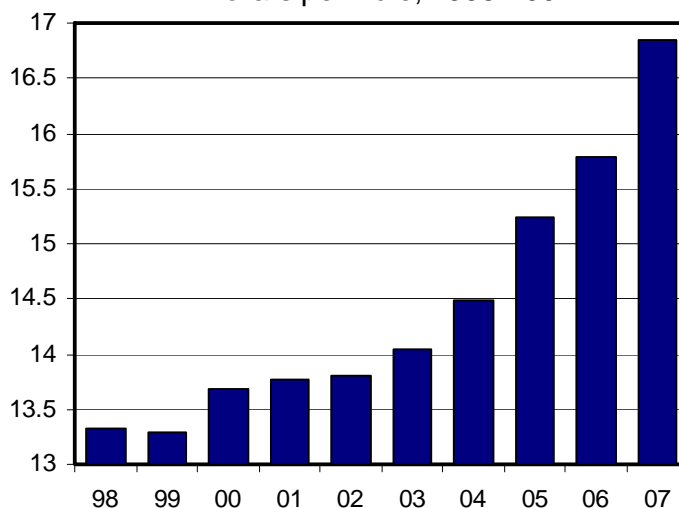
<sup>1/</sup>Reports are counted in each district where combining was done; thus some reports are included in more than one district.

### Custom Wheat Harvest Historical Rates

Year	Dollars Per Acre	Extra Charge for High Yield	
		¢ per Bushel	Above Bushels
1991	12.74	11.8	21
1992	12.90	12.1	21
1993	13.05	12.1	20
1994	13.03	12.2	21
1995	13.02	12.2	20
1996	13.32	12.4	20
1997	13.33	12.6	21
1998	13.32	12.6	21
1999	13.29	12.6	21
2000	13.68	12.8	21
2001	13.77	13.1	20
2002	13.80	13.1	22
2003	14.04	13.6	23
2004	14.48	13.6	21
2005	15.24	14.4	21
2006	15.78	14.9	21
2007	16.85	16.0	21

### Custom Wheat Harvest

Dollars per Acre, 1998-2007



## GRAIN HARVESTING (Continued)

**GRAIN SORGHUM:** Custom harvesters charged a flat rate of 26 cents per bushel in 2007. The per acre charge for harvesting grain sorghum averaged \$17.45, an increase of 81 cents per acre from last year. Additional charges averaged 15.9 cents per bushel for yields over 36 bushels per acre.

**Custom Rates for Grain Sorghum Harvest, 2007, by District**

District	Number of Reports <sup>1/</sup>	Dollars per Acre		Number of Reports <sup>1/</sup>	Extra Charge for High Yield	
		Range	Avg.		¢ per Bu.	Above Bushels
NW	25	14.00-25.00	17.40	23	17.0	33
WC	23	14.00-25.00	16.74	18	16.1	35
SW	27	14.00-25.00	16.78	22	16.3	34
NC	32	12.00-24.00	16.44	25	16.0	36
C	39	13.00-23.00	16.36	30	14.9	36
SC	36	14.00-25.00	17.58	28	15.5	35
NE	19	14.00-30.00	20.53	5	17.8	41
EC	9	16.00-30.00	21.67	<sup>2/</sup>		
SE	11	15.00-22.00	18.36	<sup>2/</sup>		
STATE	221	12.00-30.00	17.45	156	15.9	36

<sup>1/</sup>Reports are counted in each district where combining was done; thus some reports are included in more than one district.

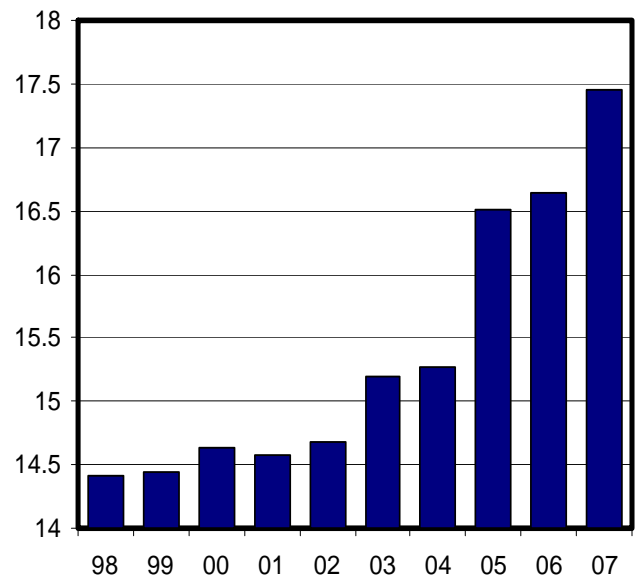
<sup>2/</sup>Insufficient number of reports; included in State total.

**Custom Grain Sorghum Harvest  
Historical Rates**

Year	Dollars Per Acre	Extra Charge for High Yield	
		¢ per Bushel	Above Bushels
1991	13.50	11.8	33
1992	14.15	11.8	36
1993	14.62	12.0	34
1994	14.27	12.0	35
1995	14.27	11.9	36
1996	14.21	12.3	36
1997	14.35	12.5	37
1998	14.42	12.4	37
1999	14.45	12.7	36
2000	14.64	12.6	34
2001	14.58	12.9	35
2002	14.68	13.0	35
2003	15.19	13.7	35
2004	15.27	13.5	36
2005	16.51	14.6	37
2006	16.64	14.8	36
2007	17.45	15.9	36

**Custom Grain Sorghum Harvest**

Dollars per Acre, 1998-2007



## GRAIN HARVESTING (Continued)

**CORN:** Custom harvesters charged a flat rate of 29 cents per bushel in 2007, up 2 cents from 2006. The per acre charge to have corn custom harvested was \$22.14, up \$0.39 from last year, with some operators adding an average extra charge of 16.4 cents per bushel for yields above 71 bushels per acre.

### Custom Rates for Corn Harvest, 2007, by District

District	Flat Rate Charge			Per Acre Charge					
	Number of Reports <sup>1/</sup>	Cents per Bushel		Number of Reports <sup>1/</sup>	Dollars per Acre		Number of Reports <sup>1/</sup>	Extra Charge for High Yield	
		Range	Avg.		Range	Avg.		¢ per Bushel	Above Bushels
NW	18	19-35	29	17	14.00-34.00	19.65	8	15.3	57
WC	21	14-38	30	11	16.00-40.00	23.45	<sup>2/</sup>		
SW	31	17-50	30	8	16.00-25.00	21.50	<sup>2/</sup>		
NC	9	20-34	28	14	14.00-28.00	20.79	7	16.3	73
C	15	18-34	28	13	15.00-24.00	20.31	6	13.8	66
SC	32	16-35	27	19	14.00-25.00	20.42	11	17.3	72
NE	7	20-34	25	53	14.00-30.00	23.40	6	13.7	80
EC	<sup>2/</sup>			33	19.00-30.00	23.88	7	16.9	78
SE	<sup>2/</sup>			20	15.00-28.00	21.35	5	16.6	80
STATE	137	14-50	29	188	14.00-40.00	22.14	57	16.4	71

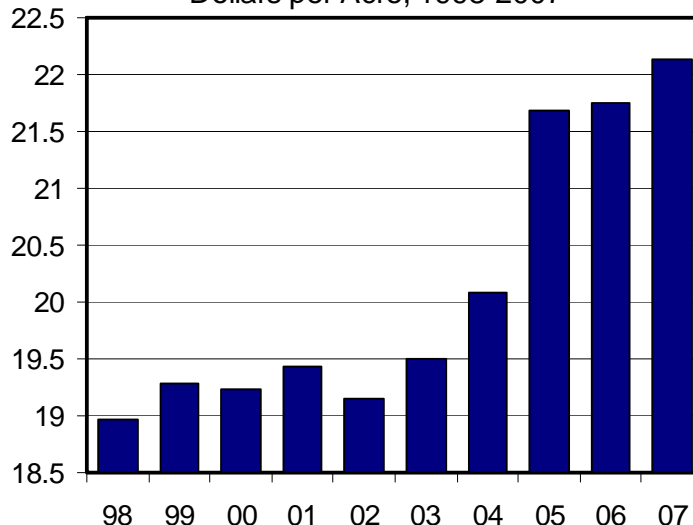
<sup>1/</sup>Reports are counted in districts where combining was done; thus some reports are included in more than one district.

<sup>2/</sup>Insufficient number of reports; included in State totals.

### Custom Corn Harvest Historical Rates

Year	Dollars per Acre	Extra Charge for High Yield		Flat Rate Charge
		¢ per Bushel	Above Bushels	¢ per Bushel
1991	18.30	9.5	58	21
1992	18.35	10.7	67	22
1993	18.21	11.8	58	21
1994	18.23	10.1	65	22
1995	17.79	12.4	62	21
1996	18.77	12.6	63	23
1997	18.72	12.3	66	23
1998	18.96	12.7	59	23
1999	19.28	12.0	70	24
2000	19.23	14.7	66	23
2001	19.43	11.9	48	23
2002	19.15	14.8	87	24
2003	19.50	14.3	69	24
2004	20.09	14.3	76	24
2005	21.68	14.2	76	26
2006	21.75	15.0	74	27
2007	22.14	16.4	71	29

### Custom Corn Harvest Dollars per Acre, 1998-2007



## GRAIN HARVESTING (Continued)

**SOYBEANS:** Custom harvesters charged a flat rate of 25 cents per bushel in 2007. The per acre charge to custom harvest soybeans increased 73 cents from 2006 for an average per acre cost of \$22.61. Some operators added an extra charge averaging 15.8 cents per bushel for yields over 28 bushels per acre.

**Custom Rates for Soybean Harvest, 2007, by District**

District	Number of Reports <sup>1/</sup>	Dollars per Acre		Number of Reports <sup>1/</sup>	Extra Charge for High Yield	
		Range	Avg.		¢ per Bushel	Above Bushels
NW	15	17.00-28.00	22.60	8	15.4	24
WC	9	20.00-32.00	25.78	-		
SW	13	19.00-34.00	25.62	<sup>2/</sup>		
NC	29	15.00-32.00	22.97	9	15.7	27
C	34	15.00-27.00	20.59	11	14.0	23
SC	44	16.00-32.00	22.70	20	16.2	28
NE	60	18.00-30.00	23.33	4	17.8	39
EC	36	18.00-30.00	22.58	5	14.8	27
SE	19	15.00-25.00	19.74	<sup>2/</sup>		
STATE	259	15.00-34.00	22.61	62	15.8	28

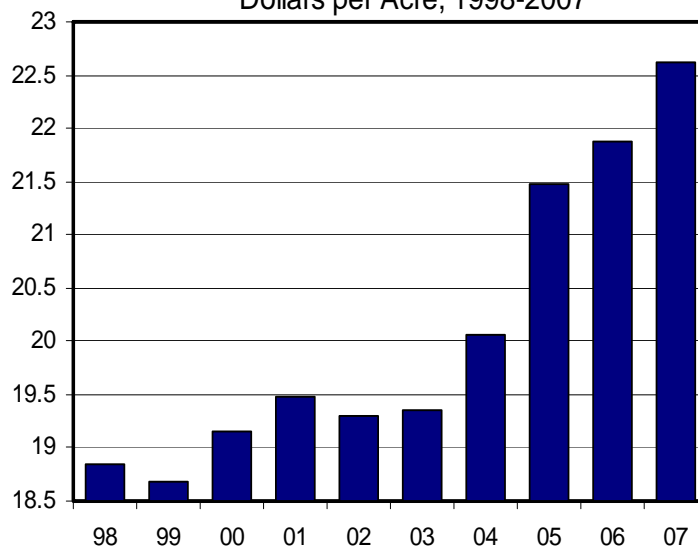
<sup>1/</sup>Reports are counted in each district where combining was done; thus some reports are included in more than one district.

<sup>2/</sup>Insufficient number of reports, included in State total.

**Custom Soybean Harvest  
Historical Rates**

Year	Dollars Per Acre	Extra Charge for High Yield	
		¢ per Bushel	Above Bushels
1991	18.07	12.1	22
1992	18.63	12.5	22
1993	17.96	12.5	23
1994	18.15	12.2	25
1995	17.65	12.2	25
1996	18.54	12.7	24
1997	18.68	12.4	26
1998	18.85	12.8	27
1999	18.69	13.0	25
2000	19.15	12.5	25
2001	19.48	12.7	24
2002	19.29	13.4	28
2003	19.35	13.3	26
2004	20.06	13.5	26
2005	21.48	14.3	26
2006	21.88	17.2	27
2007	22.61	15.8	28

**Custom Soybean Harvest  
Dollars per Acre, 1998-2007**



## GRAIN HARVESTING (Continued)

**SUNFLOWERS:** Custom harvesting of sunflowers averaged \$20.88 per acre in 2007. This compares to \$19.55 per acre in 2006. Some operators charged an extra charge for high yield of 19.8 cents per hundredweight for yields above 14.0 hundredweight per acre.

### Custom Rates for Sunflower Harvest, 2007, by District

District	Number of Reports <sup>1/</sup>	Dollars per Acre	
		Range	Avg.
NW	12	16.00-28.00	21.33
WC	<sup>2/</sup>		
SW	4	17.00-23.00	19.75
NC	6	17.00-28.00	21.50
C	5	16.00-23.00	20.60
SC	10	15.00-30.00	19.90
NE	<sup>2/</sup>		
EC	-		
SE	-		
STATE	40	15.00-30.00	20.88

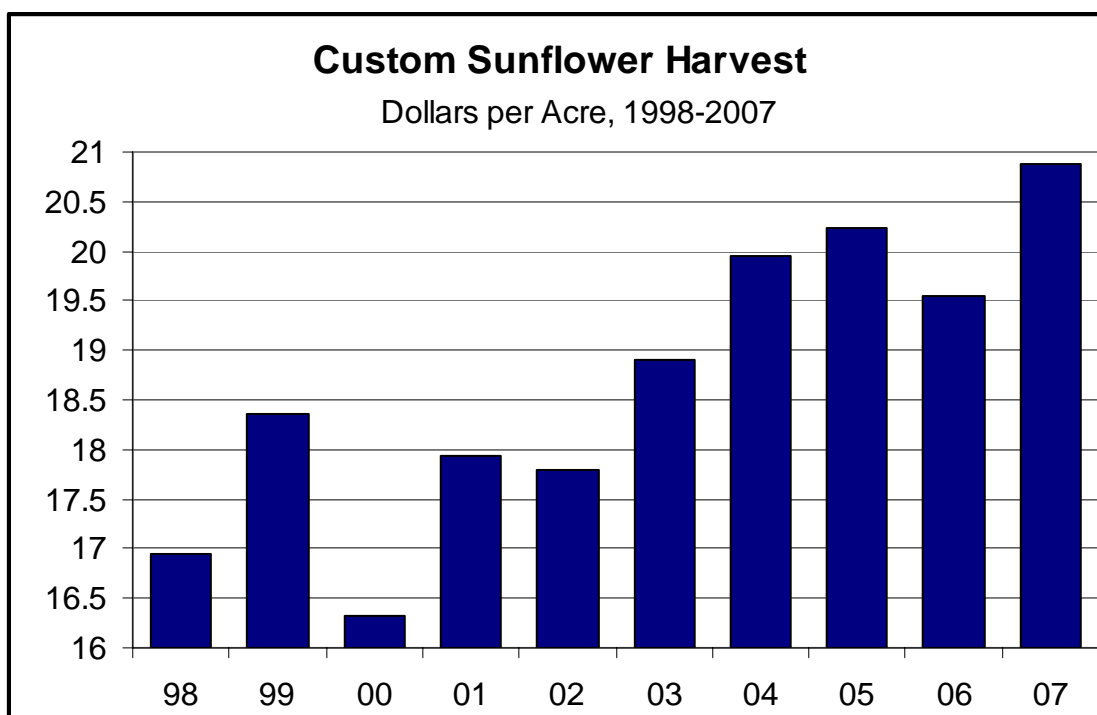
### Custom Sunflower Harvest Historical Rates

Year	Dollars per Acre	Extra Charges for High Yield	
		¢ per Cwt.	Above Cwt.
1995	16.52	<sup>3/</sup>	<sup>3/</sup>
1996	17.10	11.0	9.6
1997	17.69	11.6	5.8
1998	16.94	11.9	11.8
1999	18.35	12.0	10.8
2000	16.33	12.7	9.6
2001	17.93	13.8	8.3
2002	17.80	13.1	6.7
2003	18.90	13.7	6.4
2004	19.95	20.3	7.4
2005	20.24	19.7	7.2
2006	19.55	21.3	12.0
2007	20.88	19.8	14.0

<sup>1/</sup>Reports are counted in each district where combining was done; thus, some reports are included in more than one district.

<sup>2/</sup>Insufficient number of reports to publish; included in State totals.

<sup>3/</sup>Insufficient data to publish.



## SEED CLEANING

Wheat seed cleaning with treatment averaged \$1.07 per bushel, down from \$1.14 the previous year. Rates for cleaning wheat without treatment averaged 54 cents per bushel, compared to 51 cents in 2006. The average cost for cleaning soybeans with treatment was \$1.86 per bushel, an increase of 79 cents from the year earlier. The average cost of cleaning soybeans without any treatment was 55 cents, up 8 cents from the 2006 average.

### Custom Rates for Seed Cleaning, 2007, by District

District	WHEAT						SOYBEANS					
	With Treatment			Without Treatment			With Treatment			Without Treatment		
	Number of Reports	Cents per Bushel		Number of Reports	Cents per Bushel		Number of Reports	Cents per Bushel		Number of Reports	Cents per Bushel	
		Range	Avg.		Range	Avg.		Range	Avg.		Range	Avg.
NW	1/			10	25-60	43	-			-		
WC	6	30-250	97	19	38-52	47	-			-		
SW	8	36-65	46	17	35-75	52	-			-		
NC	14	50-225	142	19	45-90	58	-			1/		
C	17	40-210	120	35	25-150	59	-			-		
SC	15	35-210	82	40	30-150	56	-			1/		
NE	5	125-150	145	9	30-90	58	1/			3	50-55	52
EC	1/			5	50-100	62	-			1/		
SE	8	50-225	138	14	30-75	51	1/			6	40-100	58
STATE	77	30-250	107	168	25-150	54	4	130-225	186	13	40-100	55

<sup>1/</sup>Insufficient number of reports; included in State totals.

### Historical Custom Rates for Seed Cleaning

Crop	2002	2003	2004	2005	2006	2007
<b>Wheat (Cents/Bushel)</b>						
With Treatment . . . . .	86	90	82	98	114	107
Without Treatment. . . . .	46	48	47	48	51	54
<b>Soybeans (Cents/Bushel)</b>						
With Treatment. . . . .	137	110	96	113	107	186
Without Treatment . . . . .	47	50	49	55	47	55
<b>Alfalfa (Cents/Pound)</b>						
With Treatment . . . . .	1/	1/	-	1/	1/	1/
Without Treatment. . . . .	25	33	-	18	1/	16
Red Clover (Cents/Pound). . . . .						
With Treatment . . . . .	1/	1/	-	-	1/	1/
Without Treatment. . . . .	27	1/	1/	22	1/	18
<b>All Other Seed Cleaned (Cents/Pound)</b>						
With Treatment . . . . .	2/	2/	2/	-	35	-
Without Treatment. . . . .	2/	2/	2/	47	43	53

<sup>1/</sup>Insufficient data to publish.

<sup>2/</sup>Data not collected.

## GRAIN HAULING

The average custom rate charged for hauling wheat, grain sorghum, corn, and soybeans from the field to the farm or to the nearest elevator was 15.0 cents per bushel with an extra charge of 1.2 cent per bushel per mile over 15 miles. This compares with the 2006 average of 14.1 cents per bushel plus 0.9 cent per bushel per mile over 15 miles. Only reports which included both a mileage limit and a per mile charge for additional miles were tabulated in the over basic mileage column.

### Custom Rates for Hauling Grain from Field to Farm Storage Or Elevator, 2007, by District

District	Number of Reports	Cents per Bu.	Miles Limit	Cents/bu./Mile Over Basic Mileage	Number of Reports	Cents per Bu.	Miles Limit	Cents/bu./Mile Over Basic Mileage
	<b>Wheat</b>				<b>Grain Sorghum</b>			
NW	37	15.8	18	1.3	15	16.1	12	1.1
WC	44	16.1	14	1.1	19	15.5	14	0.8
SW	43	15.3	15	1.1	12	15.8	13	1.0
NC	46	15.4	15	1.4	25	15.8	16	1.6
C	47	15.4	15	1.0	24	15.2	15	0.9
SC	62	15.8	12	1.1	22	15.1	13	1.0
NE	40	15.5	19	1.5	15	14.6	17	1.8
EC	19	14.7	16	1.5	7	14.9	11	0.9
SE	18	14.7	14	1.0	7	13.4	11	1.0
STATE	356	15.5	15	1.2	146	15.3	14	1.2
	<b>Corn</b>				<b>Soybeans</b>			
NW	16	14.6	11	1.3	12	14.8	10	1.2
WC	17	18.0	14	0.8	<sup>1/</sup>			
SW	9	12.7	13	1.0	<sup>1/</sup>			
NC	13	14.2	14	1.0	15	14.2	13	0.9
C	9	13.9	13	0.7	19	15.2	17	1.1
SC	20	14.1	10	0.9	22	15.0	11	1.0
NE	39	14.1	20	1.3	41	13.7	19	1.3
EC	23	13.4	14	1.2	21	13.5	14	1.2
SE	15	13.0	13	0.9	15	15.4	15	0.9
STATE	161	14.3	15	1.1	149	14.3	15	1.1
Region	Number of Reports	Cents per Cwt.	Miles Limit	Cents/Cwt./Mile Over Basic Mileage				
	<b>Sunflowers</b>							
Western	9	35.0	19	0.9				
Central	7	29.6	10	1.0				
Eastern	<sup>1/</sup>							
STATE	18	30.3	15	0.9				

<sup>1/</sup>Insufficient number of reports; included in State totals.

## SILAGE OPERATIONS

Custom rates for silage operations were separated into four categories: 1) chopping, hauling, and filling the silo, 2) chopping and hauling, 3) chopping only, and 4) hauling only. The average rate per ton for the complete silage operation was \$6.97 per ton, up from \$6.93 the previous year. Operations which included only chopping and hauling averaged \$5.89 up 10 cents from 2006. Chopping averaged \$4.17, compared to \$4.03 the previous year, and hauling averaged \$2.30 per ton, up 8 cents from last year.

### Custom Rates for Silage Operations, per Ton, 2007, by District

District	Chopping, Hauling, & Filling Silo			Chopping & Hauling		
	Number of Reports	Dollars per Ton		Number of Reports	Dollars per Ton	
		Range	Average		Range	Average
NW	1/			6	5.25-6.25	5.67
WC	1/			5	5.15-7.25	6.06
SW	4	6.50-8.60	7.09	5	5.00-6.50	5.65
NC	4	5.25-7.00	6.15	9	4.75-6.25	5.60
C	1/			6	5.50-6.50	5.89
SC	8	5.40-12.50	7.58	6	5.30-8.00	6.18
NE	4	3.75-8.00	6.06	9	5.00-9.00	6.14
EC	3	4.50-6.25	5.58	1/		
SE	1/			1/		
STATE	31	3.75-15.00	6.97	49	4.75-9.00	5.89

<sup>1/</sup>Insufficient number of reports; included in State totals.

District	Chopping Only			Hauling Only		
	Number of Reports	Dollars per Ton		Number of Reports	Dollars per Ton	
		Range	Average		Range	Average
NW	1/			-		
WC	3	2.75-5.50	4.08	3	2.25-3.25	2.83
SW	5	1.25-6.50	3.40	3	2.50-3.00	2.67
NC	4	2.90-6.00	3.85	3	2.50-3.00	2.80
C	4	3.00-5.50	4.44	1/		
SC	4	2.65-4.75	3.61	3	1.25-3.30	2.40
NE	1/			1/		
EC	-			-		
SE	-			-		
STATE	25	1.25-6.50	4.17	17	0.20-3.30	2.30

<sup>1/</sup>Insufficient number of reports; included in State totals.

## HAYING

Mowing or swathing hay cost an average of \$10.27 per acre, 62 cents more than in 2006. Mowing or swathing forage cost an average of \$11.64 per acre, compared to \$11.05 the previous year. Mowing or swathing with conditioning was \$10.35 per acre, up 32 cents from the preceding year, and the charge for side raking averaged \$3.54 per acre, up 14 cents from 2006.

### Custom Rates for Mowing or Swathing, 2007, by District

District	Hay			Forage		
	Number of Reports	Dollars per Acre		Number of Reports	Dollars per Acre	
		Range	Average		Range	Average
NW	8	8.00-16.00	11.66	6	12.00-16.00	13.67
WC	9	10.00-14.00	11.22	9	10.00-14.00	11.33
SW	18	8.00-18.00	10.89	7	11.00-15.00	13.00
NC	19	7.00-20.00	9.66	10	8.00-16.00	11.55
C	25	7.00-13.00	9.60	13	9.00-15.00	11.54
SC	39	7.00-14.00	9.94	21	8.00-14.00	10.93
NE	20	6.00-15.00	10.35	<sup>1/</sup>		
EC	6	9.00-15.00	11.33	<sup>1/</sup>		
SE	29	3.00-15.00	10.38	5	8.00-14.00	10.80
STATE	174	3.00-20.00	10.27	76	8.00-17.50	11.64

<sup>1/</sup>Insufficient number of reports; included in State totals.

### Custom Rates for Swathing & Conditioning and Sideraking, 2007, by District

District	Swathing and Conditioning			Sideraking		
	Number of Reports	Dollars per Acre		Number of Reports	Dollars per Acre	
		Range	Average		Range	Average
NW	20	8.00-16.00	11.19	5	4.00-8.00	5.60
WC	12	10.00-14.00	11.75	3	2.00-5.00	3.33
SW	23	6.00-15.00	10.67	17	2.00-6.00	3.69
NC	14	8.00-13.00	10.32	8	2.00-5.00	3.31
C	27	7.00-15.00	9.73	16	2.00-5.00	3.14
SC	63	6.00-15.00	9.98	28	1.00-5.00	3.09
NE	17	7.00-15.00	10.87	8	2.00-6.50	3.44
EC	14	7.00-12.00	9.38	7	2.00-6.00	3.57
SE	19	5.00-15.00	10.63	12	2.00-8.00	4.27
STATE	209	5.00-16.00	10.35	104	1.00-8.00	3.54

<sup>1/</sup>Insufficient number of reports; included in State totals.

## HAYING (Continued)

Custom baling of small square bales with wire cost an average of 85 cents per bale, while baling with twine averaged 65 cents per bale in 2007. Large round bales weighing less than 1500 lbs. without net wrapping cost an average of \$9.30 per bale, while bales of the same size with net wrapping cost an average of \$9.95 per bale. Large round bales weighing over 1500 lbs. without net wrapping cost an average of \$9.11 per bale. Bales of the same size but being net wrapped cost an average of \$9.88 per bale. The charge for large square bales weighing about one ton averaged \$13.07 per bale, up 17 cents from 2006.

### Custom Rates for Baling Hay, 2007

Type of Bale	Number of Reports	Dollars per Bale	
		Range	Average
Small: Square w/Wire	39	0.50-2.00	0.85
Square w/Twine	30	0.31-2.25	0.71
Large: Round (under 1,500 lbs.) wo/net	121	6.00-17.50	9.30
Round (under 1,500 lbs.) w/net	137	4.00-19.00	9.95
Round (over 1,500 lbs.) wo/net	76	6.00-18.00	9.11
Round (over 1,500 lbs.) w/net	136	5.80-21.00	9.88
Square (approx. 1 ton)	49	7.00-30.00	13.07

### Custom Rates for Baling, Square Bales, 2007, by District

Date	Small Square With Wire			Small Square With Twine			Large Square		
	Number of Reports	Cents per Bale		Number of Reports	Cents per Bale		Number of Reports	Dollars per Bale	
		Range	Average		Range	Average		Range	Average
NW	-			1/			-		
WC	1/			1/			1/		
SW	1/			5	60-100	80	16	12.00-17.00	14.72
NC	3	80-125	102	4	31-60	48	5	8.00-25.00	13.00
C	1/			3	75-75	75	13	8.00-30.00	12.85
SC	8	60-100	74	4	35-60	53	6	9.00-14.00	10.92
NE	6	60-115	92	3	65-85	73	1/		
EC	3	65-125	97	5	50-100	67	3	8.00-8.00	8.00
SE	15	50-200	80	1/			3	7.00-16.00	11.17
STATE	39	50-200	85	29	31-100	65	49	7.00-30.00	13.07

<sup>1/</sup>Insufficient number of reports; included in State totals.

### Custom Rates for Baling, Large Round Bales, 2007, by District

District	Without Net						With Net					
	Under 1,500 lbs.			Over 1,500 lbs.			Under 1,500 lbs.			Over 1,500 lbs.		
	No. of Rpts	Dollars per Bale		No. of Rpts	Dollars per Bale		No. of Rpts	Dollars per Bale		No. of Rpts	Dollars per Bale	
		Range	Avg.		Range	Avg.		Range	Avg.		Range	Avg.
NW	3	6.00-11.00	8.33	8	7.00-11.00	8.56	7	8.00-11.00	9.36	16	5.80-11.00	8.74
WC	5	7.00-13.00	10.00	1/			11	7.00-19.00	11.14	7	8.00-13.00	10.36
SW	4	11.00-13.00	12.00	4	9.00-13.00	11.00	18	4.00-15.00	10.00	8	8.75-15.00	10.53
NC	13	6.00-9.00	7.81	7	7.00-9.00	7.89	11	6.00-12.00	8.55	13	8.00-10.00	9.00
C	14	6.00-10.50	8.86	13	6.00-10.00	8.42	15	6.50-10.50	8.53	20	7.00-12.00	9.30
SC	24	6.00-12.00	8.70	15	8.00-12.00	9.15	38	8.00-15.00	9.66	45	8.00-15.00	9.60
NE	15	6.00-15.00	9.07	18	7.00-13.00	8.88	12	7.00-17.00	9.54	13	7.50-21.00	10.44
EC	16	7.00-17.50	10.17	1/			4	9.00-18.00	12.50	8	9.00-16.00	12.38
SE	27	7.50-15.00	9.98	7	9.00-18.00	11.50	21	7.50-17.00	11.48	6	9.50-20.00	12.92
STATE	121	6.00-17.50	9.30	76	6.00-18.00	9.11	137	4.00-19.00	9.95	136	5.80-21.00	9.88

<sup>1/</sup>Insufficient number of reports; included in State totals.

## HAYING (Continued)

Custom rates for hauling small bales from the field to farm storage averaged 66 cents per bale in 2007, up 8 cents from the previous year. Rates for hauling large bales averaged \$3.88 per bale or \$8.76 per ton. Custom rates for hay stacking averaged \$56.25 per stack for stacks 4 tons and more.

### Custom Rates for Hauling Small Bales from Field to Storage, 2007

District	No. of Rpts	Cents per Bale	
		Range	Average
NW	-		
WC	-		
SW	4	40-75	54
NC	<sup>1/</sup>		
C	<sup>1/</sup>		
SC	7	50-100	74
NE	<sup>1/</sup>		
EC	5	50-205	87
SE	7	40-75	57
STATE	28	40-205	66

### Custom Rates for Stacking Hay, 2007

Stack Size (Tons)	No. of Rpts	Dollars per Stack	
		Range	Average
4 or More Tons	4	35.00-70.00	56.25

<sup>1/</sup>Insufficient number of reports; included in State totals.

### Custom Rates for Hauling Large Bales from Field to Storage, 2007, by District

District	Number of Reports	Dollars per Bale		Number of Reports	Dollars per Ton	
		Range	Average		Range	Average
NW	6	3.00-8.00	4.38	<sup>1/</sup>		
WC	3	4.00-7.50	6.17	-		
SW	10	2.50-9.00	3.50	4	2.35-4.00	3.21
NC	3	2.00-3.00	2.33	-		
C	8	1.50-12.00	4.63	4	5.00-10.00	6.25
SC	12	2.00-8.00	3.68	<sup>1/</sup>		
NE	5	1.50-10.00	4.20	<sup>1/</sup>		
EC	8	1.00-7.00	3.25	<sup>1/</sup>		
SE	10	1.50-8.00	3.70	-		
STATE	65	1.00-12.00	3.88	15	2.35-20.00	8.76

<sup>1/</sup>Insufficient number of reports; included in State totals.

### HAYING (Continued)

The custom rates for the entire haying operation include cutting, baling, hauling, and stacking. The average rate for small bales was \$1.47 per bale, up 12 cents from 2006. The large bale rate, at \$17.95 per bale was up \$1.44 from a year earlier.

#### Custom Rates for Entire Haying Operation, per Bale, 2007, by District

District	Small Bales			Large Bales		
	Number of Reports	Dollars per Bale		Number of Reports	Dollars per Bale	
		Range	Average		Range	Average
NW	-			<sup>1/</sup>		
WC	-			-		
SW	<sup>1/</sup>			6	8.00-26.00	16.08
NC	-			<sup>1/</sup>		
C	-			-		
SC	<sup>1/</sup>			5	10.00-26.50	18.50
NE	3	1.50-1.78	1.59	4	13.00-20.00	16.25
EC	<sup>1/</sup>			8	14.00-22.00	18.00
SE	3	0.55-1.05	0.73	22	12.00-40.00	17.99
STATE	12	0.45-4.50	1.47	47	8.00-40.00	17.95

<sup>1/</sup>Insufficient number of reports; included in State totals.

### ROTARY MOWING AND TREE SHEARING

The average custom rate for rotary mowing was \$10.44 per acre or \$67.92 per hour in 2007. In 2006, charges were \$10.35 per acre or \$63.16 per hour. The average custom rate for tree shearing was \$58.99 per hour for 2007.

#### Custom Rates for Rotary Mowing, 2007, by District

District	Number of Reports	Dollars per Acre		Number of Reports	Dollars per Hour	
		Range	Avg.		Range	Avg.
NW	-			-		
WC	3	10.00-13.50	11.17	-		
SW	3	8.00-15.00	11.00	-		
NC	<sup>1/</sup>			-		
C	<sup>1/</sup>			-		
SC	3	6.00-8.00	7.00	<sup>1/</sup>		
NE	6	4.10-15.00	8.77	3	50.00-85.00	73.33
EC	<sup>1/</sup>			5	50.00-100.00	67.00
SE	4	7.50-10.00	9.38	<sup>1/</sup>		
STATE	24	4.10-25.00	10.44	12	45.00-100.00	67.92

<sup>1/</sup>Insufficient number of reports; included in State totals.

#### Skid Loader Tree Shearing, 2007, by District

District	Number of Reports	Dollars per Hour	
		Range	Avg.
NW	-		
WC	-		
SW	<sup>1/</sup>		
NC	5	50.00-75.00	62.00
C	7	55.00-70.00	62.50
SC	4	30.00-80.00	57.50
NE	8	45.00-100.00	65.63
EC	<sup>1/</sup>		
SE	9	35.00-75.00	50.56
STATE	37	30.00-100.00	58.99

<sup>1/</sup>Insufficient number of reports; included in State totals.

## LAND TILLAGE

Custom rates for tillage operations vary depending on the area of the State, type of soil tillage practice, size of fields, and the size of equipment. Average charges for regular disking were \$7.93, up 14 cents from the 2006 rate. The average charge per acre for one-way disking was \$8.06, up 6 cents from the previous year average. The average offset disking charge of \$8.37 was down 16 cents per acre from the 2006 rate.

### Custom Rates for Disking, 2007, by District

District	Disking			One Way Disk			Offset Disk		
	Number of Reports	Dollars per Acre		Number of Reports	Dollars per Acre		Number of Reports	Dollars per Acre	
		Range	Avg.		Range	Avg.		Range	Avg.
NW	4	5.00-7.00	5.94	1/			4	6.00-7.50	6.50
WC	6	5.00-8.00	6.79	-			4	7.50-10.00	8.25
SW	3	6.00-7.00	6.50	1/			6	6.00-10.00	7.85
NC	1/			1/			1/		
C	11	5.50-10.00	8.02	1/			5	6.00-10.00	7.60
SC	7	6.00-10.00	7.75	1/			6	8.00-10.00	9.08
NE	10	8.00-12.00	9.45	-			1/		
EC	1/			-			4	8.00-10.00	8.85
SE	7	7.00-10.00	8.29	1/			4	9.00-10.00	9.50
STATE	51	5.00-12.00	7.93	8	6.00-10.00	8.06	36	6.00-12.00	8.37

<sup>1/</sup>Insufficient number of reports; included in State totals.

In 2007, charges for spiketooth harrowing averaged \$6.68, an increase of 80 cents per acre. The average for springtooth harrowing in 2007 was \$5.83 per acre, up 25 cents from 2006.

### Custom Rates for Harrowing, 2007, by District

District	Spiketooth Harrow			Springtooth Harrow		
	Number of Reports	Dollars per Acre		Number of Reports	Dollars per Acre	
		Range	Average		Range	Average
NW	1/			1/		
WC	1/			-		
SW	-			-		
NC	-			-		
C	1/			1/		
SC	3	5.00-6.00	5.67	1/		
NE	-			-		
EC	3	5.00-12.00	8.71	-		
SE	1/			-		
STATE	13	4.50-12.00	6.68	3	5.50-6.00	5.83

<sup>1/</sup>Insufficient number of reports; included in State totals.

### LAND TILLAGE (Continued)

Rates for custom chiseling, 4-12 inches deep, averaged \$9.75 per acre, a 65 cent per acre increase from the 2006 rate. Deep chiseling, over 12 inches deep, averaged \$11.46 per acre, a decrease of 42 cents from the previous year average of \$11.88.

#### Custom Rates for Chiseling, 2007, by District

District	Chisel (4-12")			Deep Chisel (Over 12")		
	Number of Reports	Dollars per Acre		Number of Reports	Dollars per Acre	
		Range	Average		Range	Average
NW	1/			1/		
WC	6	6.00-11.00	8.58	4	6.00-13.00	9.13
SW	5	4.75-12.00	8.25	4	8.00-19.00	13.75
NC	1/			1/		
C	3	9.00-15.00	11.83	1/		
SC	4	8.00-11.00	9.25	4	11.00-15.00	12.38
NE	7	9.00-14.00	11.57	3	14.00-18.00	15.33
EC	1/			-		
SE	6	7.00-12.00	9.42	1/		
STATE	36	4.65-15.00	9.65	21	6.00-19.00	11.46

<sup>1/</sup>Insufficient number of reports; included in State totals.

The average moldboard plowing rate decreased 40 cents per acre to \$10.64 while undercutting operations averaged \$6.66, up 23 cents from 2006.

#### Custom Rates for Plowing and Undercutting, 2007, by District

District	Moldboard Plow			Undercutter (Large "V" Blade)		
	Number of Reports	Dollars per Acre		Number of Reports	Dollars per Acre	
		Range	Average		Range	Average
NW	1/			16	5.00-10.00	6.48
WC	1/			23	4.00-8.50	6.34
SW	3	6.00-15.00	9.33	16	4.50-10.00	6.82
NC	-			3	7.50-10.00	8.83
C	-			4	5.50-7.00	6.13
SC	1/			3	6.00-10.00	7.83
NE	1/			-		
EC	1/			-		
SE	1/			-		
STATE	11	6.00-20.00	10.64	65	4.00-10.00	6.66

<sup>1/</sup>Insufficient number of reports; included in State totals.

### LAND TILLAGE (Continued)

The average rate charged by custom operators for shank cultivation was \$7.25 per acre in 2007, down 12 cents from the prior year. Wheel springtooth charges averaged \$7.56 per acre, up 54 cents from 2006.

#### Custom Rates for Field Cultivation, 2007, by District

District	Shank Cultivator			Wheel Springtooth Cultivator		
	Number of Reports	Dollars per Acre		Number of Reports	Dollars per Acre	
		Range	Average		Range	Average
NW	1/			-		
WC	3	6.00-7.00	6.50	-		
SW	1/			1/		
NC	3	7.00-8.00	7.33	-		
C	8	5.00-9.00	6.66	1/		
SC	7	5.00-10.00	6.86	3	5.00-8.00	6.33
NE	10	6.00-12.00	8.80	1/		
EC	8	5.35-10.00	7.72	-		
SE	7	4.50-8.00	6.86	-		
STATE	50	4.50-12.00	7.25	9	4.00-12.00	7.56

<sup>1/</sup>Insufficient number of reports; included in State totals.

#### Custom Rates for Land Tillage, Historical Averages

Type of Operation	1999	2000	2001	2002	2003	2004	2005	2006	2007
	<i>Dollars per Acre</i>								
Disking	5.70	6.02	6.48	6.34	6.42	6.84	7.54	7.79	7.93
One-Way Disk	5.65	6.36	6.21	6.11	6.50	7.22	6.66	8.00	8.06
Offset Disk	6.29	6.76	6.54	6.72	7.02	7.01	7.76	8.53	8.37
Spiketooth Harrow	4.59	4.56	4.80	4.82	5.33	5.25	5.31	5.88	6.68
Springtooth Harrow	4.50	4.93	5.20	4.03	4.17	4.88	5.75	5.58	5.83
Chisel 4-12"	7.00	7.44	7.79	7.61	8.02	7.96	8.45	9.10	9.75
Deep Chisel Over 12"	8.84	9.13	9.54	10.33	8.94	10.05	10.85	11.88	11.46
Moldboard Plow	9.15	9.00	8.98	9.45	9.98	11.63	11.36	11.04	10.64
Undercutter	5.21	5.49	5.38	5.38	5.47	5.58	6.07	6.43	6.66
Shank Cultivator	5.57	5.66	5.92	6.16	6.18	6.27	7.13	7.37	7.25
Wheel Springtooth Cultivator	5.36	5.20	5.36	5.67	5.27	6.00	5.75	7.02	7.56

## PLANTING

### Regular-Till

Small grain seeding charges averaged \$9.54 per acre, an increase of \$1.02 per acre. Charges for planting grain sorghum increased \$1.00 per acre to \$10.65 in 2007. The average price charged for planting corn was \$10.91 per acre, compared to \$10.30 per acre in 2006. Soybean planting charges averaged \$10.94 per acre in 2007, which is an increase of 61 cents from the previous year. The grass seeding rate increased \$1.16 per acre to \$12.60 per acre in 2007. The price for seeding alfalfa-legumes averaged \$11.35 per acre, compared to \$10.79 in 2006.

**Custom Rates for Regular-Till Planting, 2007, by District**

District	Number of Reports	Dollars per Acre		Number of Reports	Dollars per Acre	
		Range	Average		Range	Average
<b>Small Grains</b>				<b>Grain Sorghum</b>		
NW	13	5.00-12.00	7.69	4	6.50-12.00	9.38
WC	20	4.00-12.00	8.34	8 <sup>1/</sup>	7.50-12.00	9.56
SW	18	5.00-12.00	8.68			
NC	11	7.50-20.00	11.44	8	8.00-16.00	11.10
C	17	5.00-15.00	10.16	13	6.50-15.25	11.63
SC	15	6.00-17.00	10.23	15	7.00-17.00	11.27
NE	13	6.00-15.00	11.08	9 <sup>1/</sup>	8.00-14.00	11.00
EC	7	7.00-16.50	10.42			
SE	6	7.00-12.00	8.83	3	7.00-8.00	7.67
STATE	120	4.00-20.00	9.54	64	6.50-17.00	10.65
<b>Corn</b>				<b>Soybeans</b>		
NW	6	6.50-12.00	9.92	1 <sup>1/</sup>		
WC	8	9.00-13.50	11.44	1 <sup>1/</sup>		
SW	6	8.50-11.00	9.67	-		
NC	6	8.80-13.00	10.88	7	8.00-16.00	11.47
C	12	9.50-16.00	12.33	9	8.00-14.00	12.17
SC	11	6.50-17.00	11.20	15	6.50-17.00	11.13
NE	18	8.00-16.00	11.14	17	8.00-15.00	11.26
EC	7	8.00-12.50	10.64	10	6.50-16.50	10.65
SE	7	7.00-12.00	9.00	5	7.00-8.00	7.40
STATE	81	6.50-17.00	10.91	67	6.50-17.00	10.94
<b>Grass Seeding</b>				<b>Alfalfa-legume Seeding</b>		
NW	-			1 <sup>1/</sup>		
WC	1 <sup>1/</sup>			1 <sup>1/</sup>		
SW	4	11.75-15.00	13.06	1 <sup>1/</sup>		
NC	-			3	10.00-16.00	12.67
C	3	13.00-15.00	14.00	10	5.00-15.00	10.60
SC	1 <sup>1/</sup>			4	11.00-13.00	10.67
NE	1 <sup>1/</sup>			3	11.00-12.00	11.33
EC	1 <sup>1/</sup>			3	10.00-15.00	13.00
SE	4	10.00-17.00	13.50	3	5.00-13.00	8.33
STATE	18	8.00-17.00	12.60	30	5.00-16.00	11.35

<sup>1/</sup>Insufficient number of reports; included in State totals.

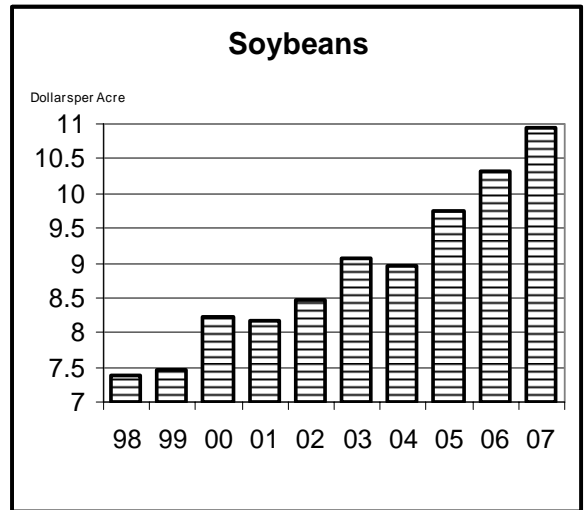
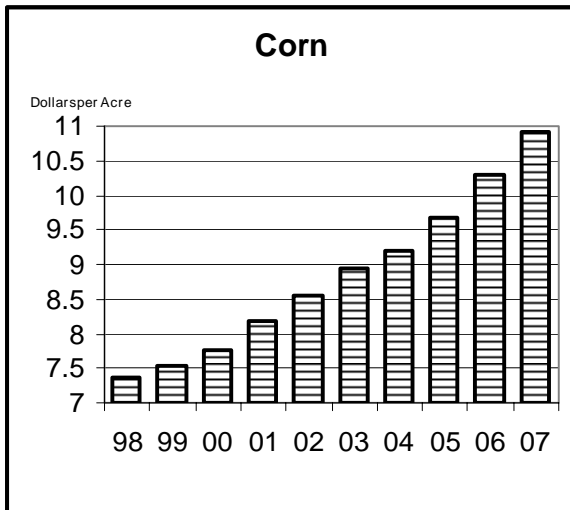
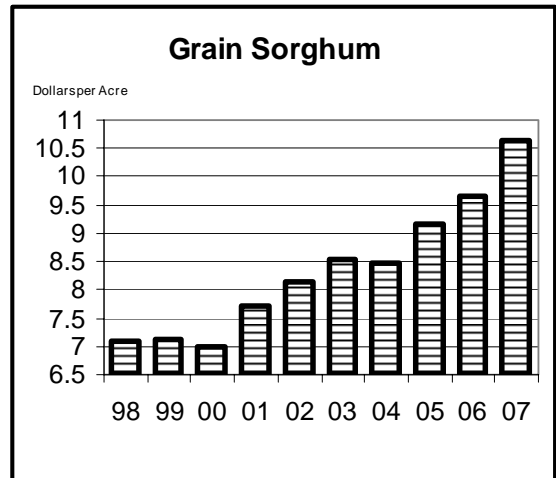
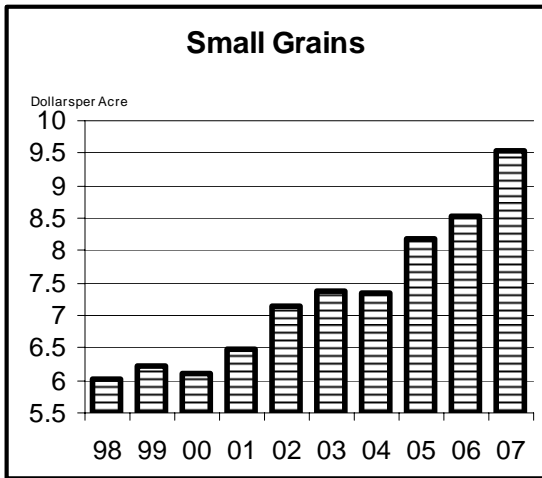
## PLANTING (Continued)

### Custom Rates for Regular-Till Planting, Historical Averages

Crops	1998	1999	2000	2001	2002	2003	2004	2005	2006	2007
<i>Dollars per Acre</i>										
Small Grains	6.07	6.22	6.10	6.49	7.13	7.38	7.35	8.17	8.52	9.54
Grain Sorghum	7.08	7.13	6.98	7.72	8.13	8.55	8.48	9.17	9.65	10.65
Corn	7.36	7.53	7.77	8.19	8.54	8.95	9.21	9.69	10.30	10.91
Soybeans	7.38	7.46	8.23	8.17	8.47	9.06	8.95	9.76	10.33	10.94
Grass	7.82	8.37	8.68	8.92	9.77	10.61	10.83	11.45	11.44	12.60
Alfalfa-Legume	7.41	7.76	7.46	8.59	9.83	10.29	9.63	10.52	10.79	11.35

### Regular-Till Planting

### Historical Averages



## PLANTING (Continued)

### Minimum-Till

Rates for minimum-till planting of small grains averaged \$12.10 per acre, up from \$11.77 in 2006. Minimum-till grain sorghum planting averaged \$12.04, up 78 cents from last year's rate. Corn planting averaged \$12.09 per acre, a 52 cent increase. Soybean planting averaged \$12.34 per acre, compared to last year's average of \$12.00 per acre.

#### Custom Rates for Minimum-Till or No-Till Planting, 2007, by District

District	Number of Reports	Dollars per Acre		Number of Reports	Dollars per Acre	
		Range	Average		Range	Average
<b>Small Grains</b>				<b>Grain Sorghum</b>		
NW	16	4.00-18.00	10.88	7	9.00-14.00	11.71
WC	14	9.50-15.00	11.75	18	6.00-12.50	10.42
SW	19	6.00-13.00	10.16	9	8.00-15.00	11.67
NC	21	9.00-20.00	13.33	20	8.00-17.00	11.72
C	32	7.00-16.00	12.25	22	8.00-16.00	12.53
SC	25	9.00-17.00	12.88	24	8.00-17.00	12.43
NE	20	9.50-15.50	12.53	8	10.00-15.00	13.00
EC	10	8.00-15.00	11.75	3	12.00-15.00	14.00
SE	12	10.00-20.00	12.67	4	10.00-20.00	14.00
STATE	169	4.00-20.00	12.10	115	6.00-20.00	12.04
<b>Corn</b>				<b>Soybeans</b>		
NW	15	9.00-14.00	11.43	3	12.00-14.00	13.00
WC	17	6.00-14.00	11.19	<sup>1/</sup>		
SW	4	10.00-14.00	11.75	<sup>1/</sup>		
NC	14	8.00-15.00	10.84	12	8.00-17.00	11.98
C	17	10.00-16.00	12.82	18	10.00-16.00	12.69
SC	17	11.00-17.00	13.46	17	8.00-17.00	12.66
NE	26	10.00-15.50	12.27	26	9.00-15.50	12.50
EC	15	8.00-15.00	11.88	17	8.00-15.00	12.06
SE	6	10.00-20.00	13.17	10	7.00-20.00	11.30
STATE	131	6.00-20.00	12.09	107	7.00-20.00	12.34

<sup>1/</sup>Insufficient number of reports; included in State totals.

#### Custom Rates for Minimum-Till or No-Till Plantings, State Historical Averages

Crops	1998	1999	2000	2001	2002	2003	2004	2005	2006	2007
<i>Dollars per Acre</i>										
Small Grains	8.91	9.76	9.77	9.89	10.11	10.36	10.72	11.45	11.77	12.09
Grain Sorghum	8.70	8.85	9.16	9.56	9.91	10.19	10.29	10.94	11.26	12.04
Corn	8.65	8.96	9.40	10.00	10.04	10.31	10.55	11.11	11.57	12.09
Soybeans	9.29	9.61	9.96	10.50	10.46	10.90	10.84	11.75	12.00	12.34

## CHEMICAL APPLICATIONS

The custom rates for chemical applications presented here include the cost of machine, power, and the operator; however, the cost of the chemicals is excluded. Rates charged for crop cultivation with fertilizer application averaged \$6.33 per acre, while cultivation without fertilizer application averaged \$6.32. This compares with \$7.60 and \$7.09 per acre, respectively, in 2006.

### Custom Rates for Row Crop Cultivation, 2007, by Region

Region	With Fertilizer			Without Fertilizer		
	Number of Reports	Dollars per Acre		Number of Reports	Dollars per Acre	
		Range	Average		Range	Average
Western	1/			7	4.00-10.00	6.43
Central	7	3.75-12.00	6.56	5	3.50-10.00	6.33
Eastern	1/			5	4.50-8.00	6.15
STATE	11	3.75-12.00	6.33	17	3.50-10.00	6.32

Dry fertilizer applications averaged \$4.20 per acre, 5 cents more per acre than in the previous year. Liquid fertilizer was applied for an average per acre charge of \$4.37, down 5 cents from 2006.

### Custom Rates for Fertilizer Application, 2007, by District

District	Dry Fertilizer			Liquid Fertilizer		
	Number of Reports	Dollars per Acre		Number of Reports	Dollars per Acre	
		Range	Average		Range	Average
NW	9	4.00-4.75	4.36	13	4.00-4.50	4.31
WC	11	3.00-5.00	4.07	22	3.50-6.00	4.13
SW	11	3.70-5.00	4.20	22	3.00-10.00	4.60
NC	25	3.75-6.25	4.43	23	3.75-8.50	4.44
C	30	3.00-5.50	4.09	53	3.00-5.00	4.10
SC	41	2.25-4.50	3.84	55	1.00-7.00	4.05
NE	41	2.00-5.25	4.39	41	3.25-6.50	4.79
EC	22	4.00-6.00	4.74	23	3.00-10.00	5.06
SE	32	3.00-5.50	4.00	27	3.06-5.00	4.28
STATE	222	2.00-6.25	4.20	279	1.00-10.00	4.37

### CHEMICAL APPLICATIONS (Continued)

Custom chemical applicators charged an average of \$8.46 per acre to apply anhydrous ammonia, \$1.71 more than the 2006 average.

#### Custom Rates for Application of Anhydrous Ammonia, 2007, by District

District	Number of Reports	Dollars per Acre	
		Range	Average
NW	3	9.50-11.00	10.17
WC	4	8.00-12.00	9.25
SW	12	3.75-10.25	7.58
NC	6	2.75-9.00	6.88
C	11	4.00-10.00	7.32
SC	10	2.00-12.00	6.05
NE	20	4.25-16.00	10.44
EC	8	4.25-14.00	9.84
SE	4	4.50-13.00	8.00
STATE	78	2.00-16.00	8.46

The average cost for aerial application of herbicide was \$5.19 per acre, up 36 cents from 2006. When herbicides were applied with a ground rig, the average cost was \$4.50, 10 cents above last year's average of \$4.40.

#### Custom Rates for Herbicide Application, 2007, by District

District	Aerial			Ground Rig		
	Number of Reports	Dollars per Acre		Number of Reports	Dollars per Acre	
		Range	Average		Range	Average
NW	5	5.00-6.00	5.55	16	3.00-5.00	4.30
WC	8	3.75-5.00	4.22	27	2.00-4.75	3.89
SW	12	3.25-5.75	4.78	25	3.50-10.00	4.77
NC	7	4.00-6.00	4.86	32	3.75-5.00	4.35
C	6	4.00-8.50	5.67	53	3.00-10.00	4.38
SC	12	3.50-7.00	4.71	49	2.00-6.50	4.07
NE	8	4.00-9.00	6.50	48	2.50-5.75	4.80
EC	<sup>1/</sup>			40	3.85-11.25	5.27
SE	<sup>1/</sup>			37	3.06-5.75	4.45
STATE	63	3.25-9.00	5.19	327	2.00-11.25	4.50

<sup>1/</sup>Insufficient number of reports; included in State totals.

**CHEMICAL APPLICATIONS (Continued)**

The average cost for aerial application of insecticide was \$5.48 per acre, up 28 cents from the previous year. When insecticides were applied with a ground rig, the average cost was \$4.49 per acre, down 2 cents from the 2006 rate.

**Custom Rates for Insecticide Application, 2007, by District**

District	Aerial			Ground Rig		
	Number of Reports	Dollars per Acre		Number of Reports	Dollars per Acre	
		Range	Average		Range	Average
NW	3	4.50-6.00	5.33	4	4.50-4.50	4.50
WC	7	4.00-5.00	4.36	14	3.50-4.50	4.06
SW	12	3.25-5.75	4.83	13	3.50-5.00	4.17
NC	<sup>1/</sup>			17	4.00-5.50	4.46
C	5	4.00-6.50	5.60	36	3.60-5.00	4.34
SC	9	3.50-7.00	5.31	30	2.00-5.75	4.13
NE	6	4.00-9.00	6.75	29	3.50-5.50	4.97
EC	3	7.50-8.00	7.67	17	4.00-7.50	5.38
SE	<sup>1/</sup>			31	3.06-6.00	4.42
STATE	48	3.25-9.00	5.48	191	2.00-7.50	4.49

<sup>1/</sup>Insufficient number of reports; included in State total.

**Custom Rates for Chemical Application, State Historical Averages**

Type of Operation or Application	1999	2000	2001	2002	2003	2004	2005	2006	2007
<i>Dollars per Acre</i>									
Cultivation with Fertilizer	5.61	6.48	6.77	6.19	6.64	6.73	7.59	7.60	6.33
Cultivation without Fertilizer	5.88	5.75	6.25	6.01	5.95	6.08	7.05	7.09	6.32
Dry Fertilizer	3.23	3.40	3.53	3.58	3.68	3.78	4.01	4.15	4.20
Liquid Fertilizer	3.33	3.50	3.57	3.72	3.78	3.87	4.17	4.42	4.37
Anhydrous Ammonia	5.28	5.67	5.61	5.90	6.18	6.93	7.12	6.75	8.46
Herbicide									
Aerial	4.15	4.20	4.39	4.52	4.30	4.29	4.56	4.83	5.19
Ground Rig	3.48	3.59	3.72	3.81	3.85	4.03	4.26	4.40	4.50
Insecticide									
Aerial	4.16	4.19	4.42	4.49	4.83	4.30	4.74	5.20	5.48
Ground Rig	3.54	3.66	3.77	3.90	3.92	4.02	4.33	4.51	4.49

## FEED PREPARATION

Rates for custom feed preparations are those generally charged by grain elevators and feed mills. Rates charged in 2007 were similar to those reported in 2006. Reports averaged 44 cents per hundredweight (cwt.) for grinding grain, 39 cents per cwt. for rolling grain, 57 cents per cwt. for grinding hay, 33 cents per cwt. for mixing, 57 cents per cwt. for rolling and mixing, and 58 cents per cwt. for grinding and mixing.

### Custom Rates for Feed Preparation, 2007, by District

District	Grinding Grain			Rolling Grain			Grinding Hay		
	Number of Reports	Cents per Cwt.		Number of Reports	Cents per Cwt.		Number of Reports	Cents per Cwt.	
		Range	Avg.		Range	Avg.		Range	Avg.
NW	1/			-			4	40-75	58
WC	1/			5	30-90	48	-		
SW	1/			1/			-		
NC	4	25-45	33	12	25-75	37	4	50-130	90
C	3	35-50	45	6	20-40	25	4	20-75	37
SC	6	30-50	38	11	30-40	37	3	42-75	56
NE	5	20-88	47	1/			1/		
EC	5	35-100	65	5	35-100	63	-		
SE	11	25-85	39	12	20-85	36	1/		
STATE	38	20-100	44	55	20-100	39	17	20-130	57

<sup>1/</sup>Insufficient number of reports; included in State totals.

District	Mixing			Rolling and Mixing			Grinding and Mixing		
	Number of Reports	Cents per Cwt.		Number of Reports	Cents per Cwt.		Number of Reports	Cents per Cwt.	
		Range	Avg.		Range	Avg.		Range	Avg.
NW	1/			1/			1/		
WC	4	30-80	45	5	20-80	60	1/		
SW	1/			3	30-60	47	1/		
NC	9	10-45	25	8	22-70	43	4	22-90	42
C	6	15-25	18	6	25-55	37	3	35-65	50
SC	11	20-35	30	8	55-75	66	4	55-80	63
NE	5	20-80	43	1/			3	25-85	52
EC	6	15-100	52	7	50-100	81	3	60-100	87
SE	13	15-85	31	10	25-80	56	6	50-71	58
STATE	58	10-100	33	51	20-100	57	28	22-100	58

<sup>1/</sup>Insufficient number of reports; included in State totals.

### FEED PREPARATION (Continued)

Charges for pelleting feed operations averaged 83 cents per cwt., 3 cents less than in 2006. The charge for grinding, mixing, and pelleting operations combined averaged \$1.34 per cwt., 32 cents higher than in 2006. Sacking operations, excluding the cost of sacks, averaged \$1.27 per cwt., 14 cents higher than the previous year's average.

#### Custom Rates for Feed Preparation, 2007

District	Pelleting Only			Grinding, Mixing, and Pelleting			Sacking		
	Number of Reports	Cents per Cwt.		Number of Reports	Cents per Cwt.		Number of Reports	Cents per Cwt.	
		Range	Avg.		Range	Avg.		Range	Avg.
NW	1/			-			3	100-200	133
WC	-			-			3	100-300	217
SW	1/			1/			3	70-250	150
NC	1/			-			8	54-250	134
C	-			-			4	75-300	169
SC	1/			1/			11	30-250	95
NE	-			-			3	50-100	80
EC	-			-			5	120-220	188
SE	4	50-100	83	3	120-171	147	11	25-160	92
STATE	8	50-125	83	6	115-171	134	51	25-300	127

<sup>1/</sup>Insufficient number of reports; included in State totals.

#### Custom Rates for Feed Preparation, State Historical Averages

Type of Preparation	1999	2000	2001	2002	2003	2004	2005	2006	2007
<i>Cents per Cwt.</i>									
Grinding Grain	31	35	34	36	35	36	39	38	44
Rolling Grain	29	30	31	33	33	34	36	37	39
Grinding Hay	-	-	66	74	62	25	32	55	57
Mixing	22	23	23	26	26	26	28	28	33
Rolling and Mixing	45	42	49	51	52	56	58	58	57
Grinding and Mixing	46	51	53	53	57	57	62	61	58
Pelleting	73	82	70	76	84	79	89	86	83
Grinding, Mixing, and Pelleting	122	126	118	119	114	116	120	102	134
Sacking (excluding sacks)	88	93	91	95	116	112	115	113	127

## FEED DELIVERY

There are many different methods of charging for bulk feed deliveries. Rates for four of the most commonly reported methods are presented below. Method 1 has a charge per load plus a charge per mile. Other types of charges were reported but could not be summarized for this report due to an insufficient number of reports. Many operators also charged extra for miles beyond a specified limit. For all methods, the average extra charge was \$1.66 per mile per load after 10 miles.

**Custom Rates for Feed Delivery, 2007, by District**

District	Method 1 (Charge per Load plus Mileage)				Method 2 (Charge per Mile)			Method 3 (Charge per Ton)			Method 4 (Charge per Load)			Extra Charge (All Methods)		
	Number of Reports	Dollars Per Load	Dollars + Per Mile	Avg Load (Tons)	Number of Reports	Dollars Per Mile	Avg. Load (Tons)	Number of Reports	Dollars per Ton	Avg Load (Tons)	Number of Reports	Dollars Per Load	Avg. Load (Tons)	Number of Reports	Max Miles	Extra Dollars per Mile
NW	-				-			-			<sup>1/</sup>			<sup>1/</sup>		
WC	<sup>1/</sup>				3	2.33	10.7	-			3	16.33	8.3	3	6	1.75
SW	<sup>1/</sup>				-			-			<sup>1/</sup>			<sup>1/</sup>		
NC	4	29.51	1.46	8.8	<sup>1/</sup>			-			4	22.75	10.8	<sup>1/</sup>		
C	5	23.50	0.80	10.6	<sup>1/</sup>			<sup>1/</sup>			3	23.84	7.7	<sup>1/</sup>		
SC	6	16.67	1.79	9.5	3	2.67	13.3	-			4	43.25	8.3	<sup>1/</sup>		
NE	<sup>1/</sup>				<sup>1/</sup>			<sup>1/</sup>			6	34.17	6.3	<sup>1/</sup>		
EC	4	19.75	1.45	7.3	<sup>1/</sup>			<sup>1/</sup>			4	46.25	6.5	<sup>1/</sup>		
SE	<sup>1/</sup>				5	2.28	14.8	3	8.33	6.3	6	30.62	7.5	-		
STATE	25	24.18	1.57	8.8	17	2.43	12.5	7	8.43	8.7	35	32.95	8.0	13	10	1.66

<sup>1/</sup>Insufficient number of reports, included in State totals.

## MACHINERY RENTAL

Rental costs listed below do not include the cost of fuel or labor for self-propelled equipment and tractors. Fertilizer applicators were the most commonly reported rental items, followed by tractors, combines, and planting equipment. Many items, such as cultivators, chisels, and mower/conditioners, were reported but had too few reports to summarize.

Rental charges are similar to those reported in recent years. Average rental costs for most items show increases or decreases due to the varied demand and increasing costs of implements. Some of the variation may be due to the small number of reports for some rental items.

**Machine Rental Rates, 2007**

Machine or Tool	Method of Charge	Number of Reports	Range	Average
Combine	\$/Hour	28	70.00-180.00	119.00
Flex Head	\$/Acre	3	5.50-7.00	6.17
No-Till Drill	\$/Acre	4	8.00-10.00	9.25
Drill Seeder	\$/Acre	3	7.00-8.00	7.67
Field Cultivator	\$/Acre	3	2.75-6.00	4.92
Sweep Tillage Tool	\$/Acre	3	2.50-7.50	4.67
<b>Fertilizer Applicators</b>				
Dry	\$/Ton	17	1.50-30.00	9.19
Dry	\$/Acre	6	1.00-3.00	1.79
Anhydrous	\$/Ton	3	11.00-20.00	15.33
Anhydrous	\$/Acre	10	1.00-4.50	2.22
Dual	\$/Acre	4	2.00-4.00	2.68
Liquid	\$/Acre	5	1.00-5.50	2.75
<b>Hay Equipment</b>				
Baler, Large Bales	\$/Bale	6	2.25-6.00	4.15
Rake	\$/Acre	<sup>1/</sup>		
<b>Tractor</b>				
51-100 HP	\$/Hour	5	15.00-25.00	17.00
101-150 HP	\$/Hour	6	15.00-27.00	20.38
151-200 HP	\$/Hour	6	15.00-33.00	23.77
201+ HP	\$/Hour	3	32.50-35.00	34.17
Size Not Specified	\$/Hour	6	20.00-40.00	29.17
Skid Loader	\$/Hour	3	50.00-125.00	76.67

<sup>1/</sup>Insufficient number of reports.

## TERRACING AND DOZING

Building terraces averaged 77 cents per foot, an increase of 13 cents per foot from 2006. The average cost for general dozer work was \$109.40 per hour, compared with \$99.79 from the previous year.

### Custom Rates for Terracing and Dozing, 2007, by District

District	Number of Reports	Cents per Foot		Number of Reports	Dollars per Hour		
		Range	Average		Range	Average	
		<i>Terracing</i>			<i>Dozing</i>		
NW	1/			-			
WC	1/			1/			
SW	1/			1/			
NC	1/			1/			
C	1/			1/			
SC	1/			1/			
NE	3	45-200	107	12	50-150	109	
EC	-			1/			
SE	1/			6	75-135	106	
STATE	12	14-200	77	26	50-150	109	

<sup>1/</sup>Insufficient number of reports; included in State totals.

## MANURE REMOVAL AND SPREADING

Custom rates for manure removal alone averaged \$5.16 per ton for 2007. Manure removal and spreading averaged \$5.20 per ton, and additional mileage charges averaged \$1.28 per mile hauled.

### Custom Rates for Manure Removal by Region, 2007

Region	Manure Removal			Removal and Spreading			Additional Charges per Mile		
	Number of Reports	Dollars per Ton		Number of Reports	Dollars per Ton		Number of Reports	Dollars per Mile	
		Range	Avg.		Range	Avg.		Range	Avg.
Western	6	1.25-5.00	2.43	9	1.25-35.00	5.73	7	0.15-3.00	0.79
Central	4	2.00-28.00	9.25	6	1.50-3.00	2.15	1/		
Eastern	-			1/			-		
STATE	10	1.25-28.00	5.16	17	1.25-35.00	5.20	9	0.15-5.00	1.28

<sup>1/</sup>Insufficient number of reports; included in State totals.

## FENCE BUILDING

Rates for fence building listed below were reported on the Bluestem Pasture Survey completed in April of 2007. Producers in the 14 Flint Hills counties were surveyed and asked to provide current fence building costs. The reported rates varied considerably due to the difference in materials, equipment, and terrain. The rate charged for building a five-wire, all-steel post fence, excluding materials, averaged \$9.25 per rod. The rate including materials averaged \$19.89 per rod. Average hourly rates charged for fence building are \$39.74 per hour with equipment and \$21.50 per hour without equipment.

### Custom Rates for Fence Building, per Rod<sup>1/</sup>, 2007

Fence Type	Steel Posts Only			Steel & Wood Posts Only		
	Number of reports	Dollars per Rod		Number of Reports	Dollars per Rod	
		Range	Average		Range	Average
Four Wire	<sup>2/</sup>	Excluding Materials		<sup>2/</sup>	Excluding Materials	
Five Wire	34	5.00-26.40	9.25	8	6.00-33.00	11.72
Four Wire	<sup>2/</sup>	Including Materials		<sup>2/</sup>	Including Materials	
Five Wire	41	6.50-42.90	19.89	19	12.50-49.50	27.22

<sup>1/</sup>Additional charges for rough and rocky terrain ranged from \$.50 to \$5.00 per rod and averaged \$1.66 per rod.

<sup>2/</sup>Insufficient number of reports.

Custom Fence Builders	Number of Reports	Dollars per Hour		Average Number of Persons
		Range	Average	
With Equipment	19	10.00-60.00	39.74	1.7
Without Equipment	8	10.00-40.00	21.50	1.6